

Griffin High Pressure Jet Pumps

Features:

- Use on a variety of applications requiring high pressure flow for jetting wellpoints, well casings or pilings
- Variety of seal configurations available – conical seal, mechanical seal or packing
- End suction centrifugal pumps
- Hand primers standard; automatic primers are available
- Integral fuel tank designed for 24 hour operation
- Trailer mounted versions available



Jet Pump used for jetting well-points or casings.

GRIFFIN
PUMP & EQUIPMENT, INC.

Over 70 Years of Excellence

Griffin Pump & Equipment, Inc.

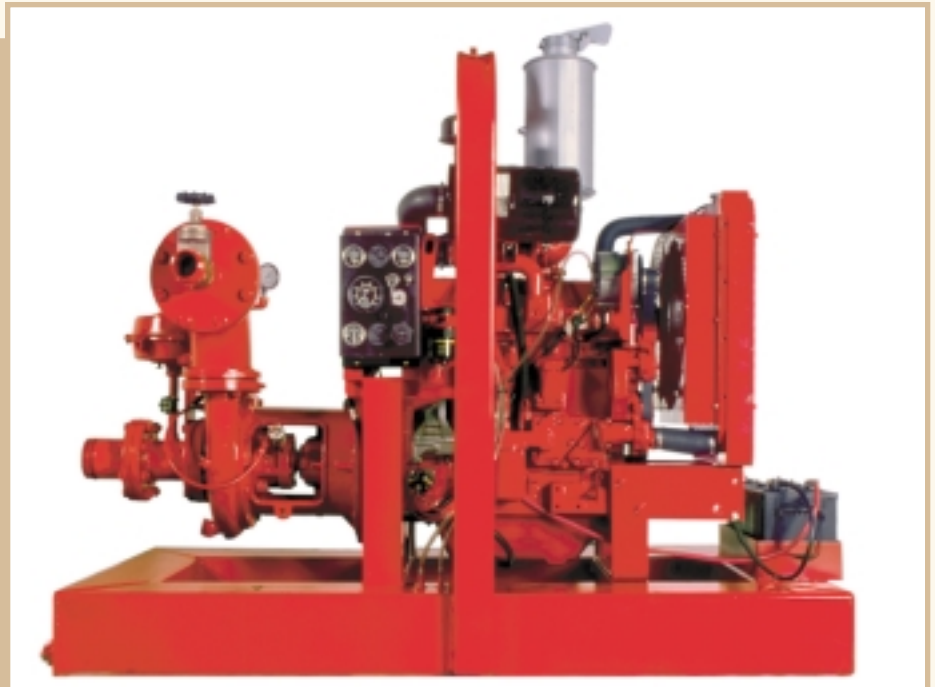
5731 Harvey Wilson Drive • Houston, TX 77020

Tel: (713) 671-8157 or (866) 770-8100

Fax: (713) 675-1304

Email: gpe@griffinpump.com

www.griffinpump.com



Griffin's High Pressure Jet Pumps are available in 4" and 6" models. These pumps are self-contained and portable.

These pumps are capable of delivering flow up to 1350 gpm and head conditions up to 300 ft. and higher. These pumps come equipped with hand-operated diaphragm primers as standard but can be equipped for automatic priming. Griffin jet pumps are an ideal solution for field installation of wellpoints or well casings without digging or drilling.

These pumps are available in diesel or electric models. Other options and sizes are available. Contact Griffin for more information.

Griffin High Pressure Jet Pumps



4" High Pressure Trailer Mounted Jet Pump.



6" High Pressure Jet Pump used for a dewatering project.



8" High Pressure Jet Pump.

Standard Units:

Description	Size	Model	Maximum Capacity (GPM)	Maximum Head (Feet)	Maximum Head (PSI)
High Pressure Pump	4"	4EHDD	750	300	130
High Pressure Pump	6"	6EHHD	1350	300	130

Other sizes and models may be available. Contact Griffin for more information and options available.

Specialty Units: available per customer request

Description	Size	Model	Maximum Capacity (GPM)	Maximum Head (Feet)	Maximum Head (PSI)
High Pressure Pump	6"	405-1	1480	800	350
High Pressure Pump	6"	155DGM	650	690	300
High Pressure Pump	6"	275DGM	1300	855	370
High Pressure Pump	6"	365DGM	1400	855	370
High Pressure Pump	6"	8365DGM	2200	650	281

Other sizes and models may be available. Contact Griffin for more information and options available.

Sales ▪ Rental ▪ Service

GRIFFIN
PUMP & EQUIPMENT, INC.

Griffin Pump & Equipment, Inc.

5731 Harvey Wilson Drive • Houston, TX 77020

Tel: (713) 671-8157 or (866) 770-8100

Fax: (713) 675-1304

Email: gpe@griffinpump.com

www.griffinpump.com