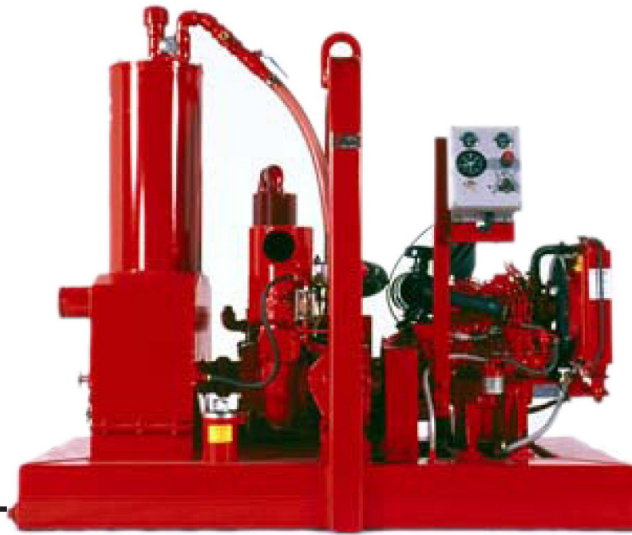


4" Wellpoint Pump

Model 4WPRD



MODEL FEATURES

- Fully automatic, dry priming and dry running, self-contained, portable dewatering pump
- Handles large volumes of air and water
- Operates efficiently under intermittent flow conditions
- Automatically primes and reprimates at suction lifts of 25 feet or greater

PUMP

MODEL: Peerless
SIZE: 4" x 3" x 8"
CASING: Class 30 cast iron
IMPELLER: Enclosed, Bronze
SEAL: Single mechanical seal
SUCTION WEAR PLATE: Bronze
SHAFT: AISI 1040 or equivalent
SHAFT SLEEVE: Bronze or stainless steel
SOLIDS HANDLING: 0.62"

ENGINE

MAKE: Kubota
MODEL: V1305
TYPE: 4-cylinder, 4-cycle water cooled, naturally aspirated diesel
DISPLACEMENT: 81.5 cu in.
GOVERNOR: Mechanical
LUBRICATION: Constant pressure, full flow
AIR CLEANER: Replaceable dry element
ELECTRICAL SYSTEM: 12V DC

SAFETY SHUTDOWNS: High head temperature, low oil pressure
MANUFACTURER'S PERFORMANCE:
Rated Power - hp (kW)
intermittent: 26(19.4)
continuous: 20 (15.3)
Rated speed - rpm: 2400

VACUUM PUMP

MODEL: Wallenstein 151HRF
TYPE: Rotary vane, air cooled, oil lubricated
CAPACITY: 60 cubic inch SCFM @ 1150 rpm nominal
CASING: Class 30 cast iron
ROTOR: Class 30 cast iron with self-adjusting, Ferobestos ® vanes

VACUUM PUMP OIL RECLAIMING SYSTEM

CONSTRUCTION: carbon steel
OIL FILL LEVEL: 5 gallons
VOLUME: 2485 cu in.
OIL COOLER: integral to air separation chamber

AIR SEPARATOR

CONSTRUCTION: Carbon steel
FLOAT ASSEMBLY: Direct-acting stainless steel float with stainless steel support and corrosion-resistance components
FLOAT SIZE: 636 cu in.
AIR DOME: Bronze with nylon valve seats and polypropylene backflow preventer check ball

VALVES: Nylon, replaceable
WET CHAMBER: 4174 cu in.
AIR CHAMBER: 3052 cu in.
VACUUM RELIEF VALVE: 50 CFM

STANDARD FITTINGS

DISCHARGE VALVE: fabricated steel with 4" Victaulic ® nipple, flapper-type with replaceable weights
INLET: 4" Victaulic ® nipple

STANDARD EQUIPMENT

- Integral fuel tank (6" x 6" rectangular tubing) with 24 hour run time fuel capacity
- Center point lifting bail
- Battery box
- Vacuum gauge with liquid filled, stainless steel case

AVAILABLE OPTIONS

- Optional I-beam skid frame
- Optional DOT trailer
- Other engines & pumps may be available upon customer request

PHYSICAL DIMENSIONS

WEIGHT: 1850 lbs
LENGTH: 75"
WIDTH: 34"
HEIGHT: 68"

In the interest of product improvement, specifications may change without notice.



GRIFFIN

Pump & Equipment, Inc.

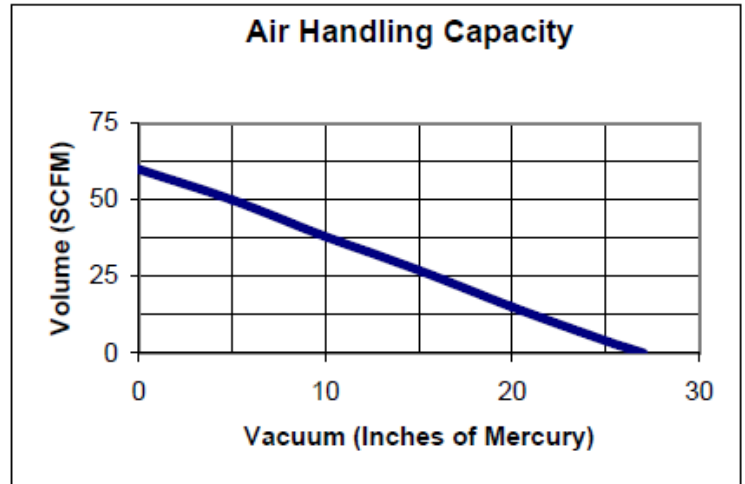
5306 Clinton Drive, Houston, TX 77020
(713)676-8000 Fax: (713)676-8080
web: www.griffinpump.com
e-mail: gpe@griffinpump.com

© Copyright Griffin Pump & Equipment, Inc. 2012

GRIFFIN 4" WELLPOINT PUMP

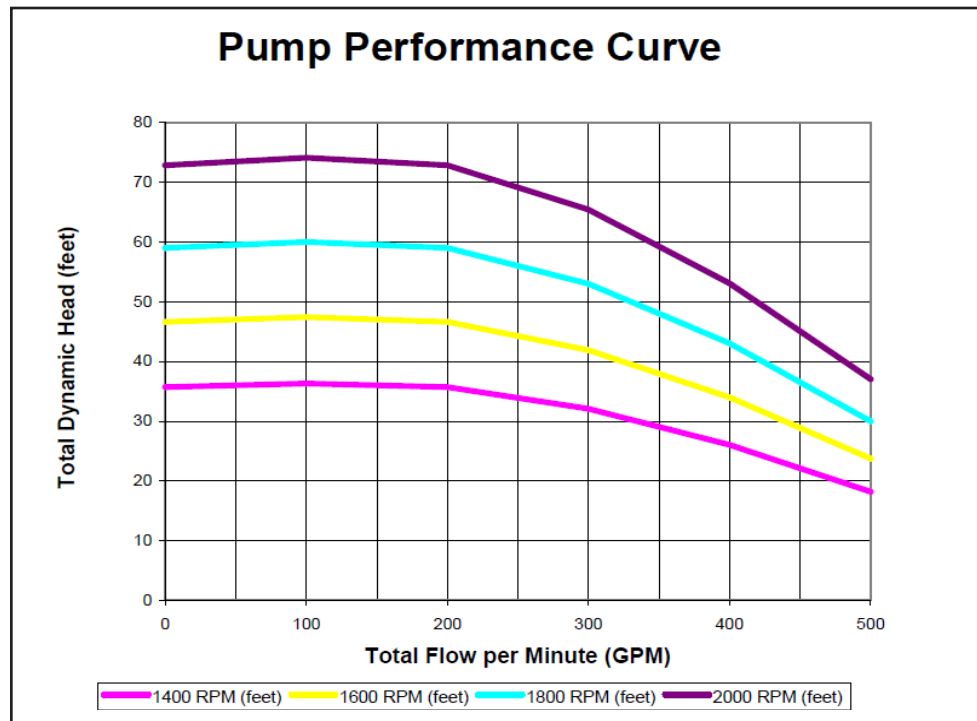
Model: 4WPRD

- Vacuum assisted, self priming
- End suction
- Wellpoint systems
- High air-handling
- Centrifugal pump



Driver RPM: 1800
Driven RPM: 850

Horsepower: 10
Type: Rotary Vane



In the interest of product improvement, specifications may change without notice.



GRIFFIN
Pump & Equipment, Inc.

5306 Clinton Drive, Houston, TX 77020
(713)676-8000 Fax: (713)676-8080
web: www.griffinpump.com
e-mail: gpe@griffinpump.com

© Copyright Griffin Pump & Equipment, Inc. 2012